

**Aldreds**  
Estate Agents



44 Colby Drive

, Bradwell, NR31 9FT

Guide Price £235,000 - £240,000





## 44 Colby Drive

, Bradwell, NR31 9FT

\*Guide Price £235,000-£240,000\*

This modern three-bedroom end-terrace house offers beautifully maintained accommodation spread generously over three floors. The property boasts a spacious master bedroom complete with an en-suite, providing a private retreat.

Further features include off-road parking for three vehicles, a desirable location in Bradwell, and a combined kitchen/diner. The property benefits from three double bedrooms and a shed in the rear garden with an electricity connection, offering versatile additional space. Excellent transport links and local amenities are all within convenient distance.

### Porch

Ceramic tile floor, radiator, doubled door to front, electric consumer box, access to lounge.

### Lounge

14'9" x 11'9" (4.5m x 3.6m)

Carpet floor, double glazed window to front, radiator, cupboards under stairs, access through to kitchen.

### Hallway

Carpet floor, access to kitchen and cloak room, stairs leading to first floor.

### Cloak Room

Plastic tile floor, WC, basin, radiator.

### Kitchen

7'6" x 11'9" (2.3m x 3.6m)

Ceramic tile floor, double glazed window and French doors to rear, laminate counter tops with under counter and wall mounted cupboards, space for fridge freezer, washing machine and slim line dish washer, integrated hob and oven with extractor fan, sink and draining board. Cupboard with ideal combi boiler within warranty.

### First Floor Landing

Carpet floor, radiator, access to bedrooms 2 and 3 and bathroom, stairs leading to 2nd floor.

### Bedroom 2

8'10" x 11'9" (2.7m x 3.6m)

Carpet floor, double glazed windows to front, radiator.

### Bedroom 3

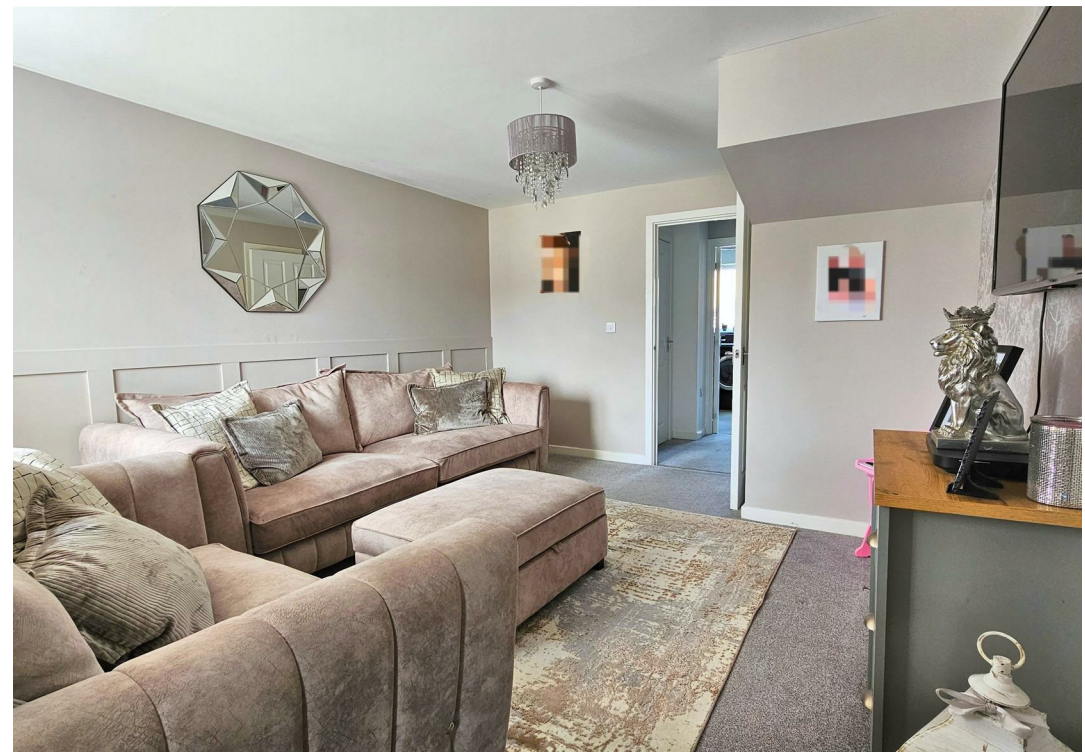
7'6" x 11'9" (2.3m x 3.6m)

Carpet floor, radiator, double glazed window to rear.

### Bathroom

7'2" x 5'6" (2.2m x 1.7m)

Vinyl floor, double glazed window to side, bath with wall mounted shower, WC, basin, radiator.







### Second Floor Landing

Carpet floor, access to bedroom 1, cupboard.

### Bedroom 1

17'0" x 8'6" (5.2m x 2.6m)

Carpet floor, built in wardrobe, double glazed window to front, radiator, access too en-suite and loft hatch.

### En-Suite

4'11" x 11'9" (1.5m x 3.6m)

Vinyl floor, WC, basin, shower cubicle with wall mounted shower, towel rail, double glazed Velux window to rear, radiator.

### Outside Front

Concrete path to front door, Brick weave driveway for 2 cars, shingle driveway space for 1 car.

### Outside Rear

Artificial grass, concrete patio area, timber fence boundaries with side access, timber built shed with electric connection, outside tap.

### Tenure

Freehold - Estate charge £120 a year, this covers maintenance of shared road, grass area and park.

### Services

Mains gas, electric, water, drainage.

### Council Tax

Great Yarmouth Borough Council - Band C

### Location

Bradwell is a popular residential area adjoining Gorleston 2 miles from Great Yarmouth Town centre \* There are a variety of local shops \* Schools \* Medical centre \* Regular bus services to the main shopping areas \* Indoor swimming pool and recreation areas.

### What3Words

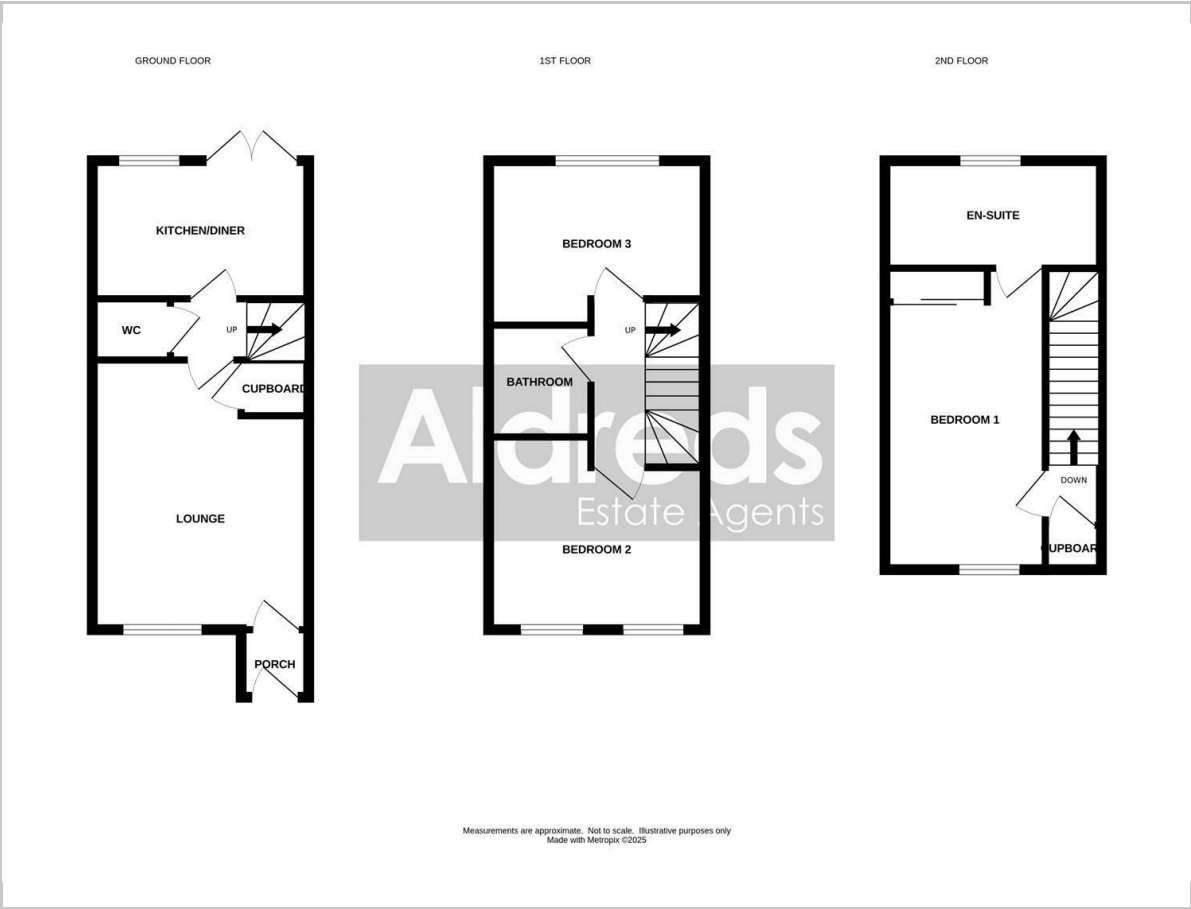
///drummers.blaze.tablet

### Ref

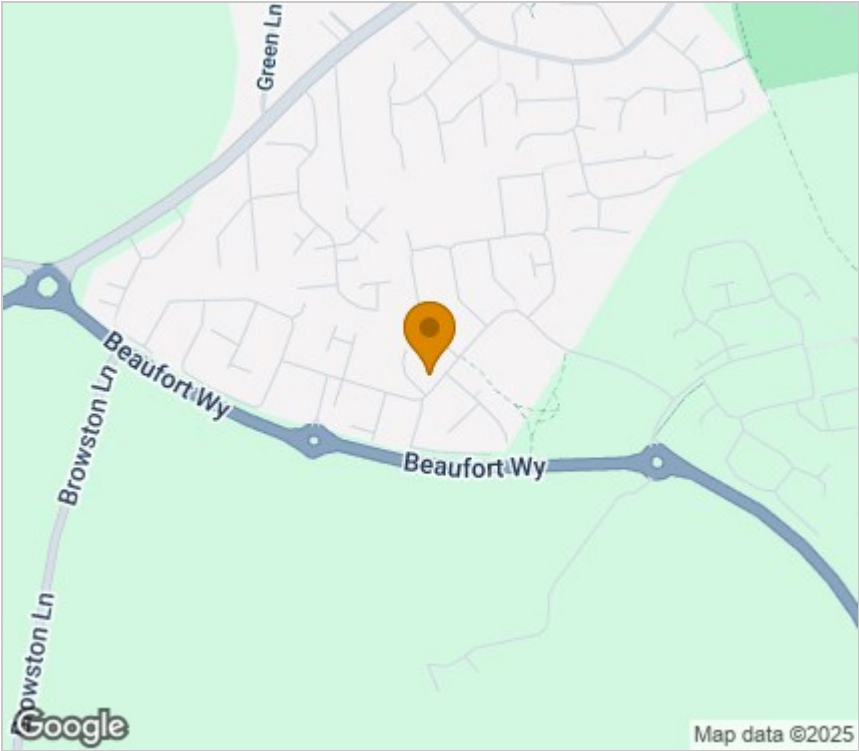
G18324/06/25



Floor Plan



Area Map



Viewing

Please contact our Aldreds Gorleston Office on 01493 664600 if you wish to arrange a viewing appointment for this property or require further information.

Disclaimer  
These particulars are issued on an understanding that all negotiations shall be conducted through Messrs. Aldreds. Please note: Messrs. Aldreds for themselves and for the vendors or lessors of this property whose agents they are given notice that: 1. Particulars are set out as a general outline only for guidance of intending purchasers or lessees, and do not constitute nor constitute part of, an offer or contract. 2. All descriptions, dimensions, references to condition and necessary permissions for use and occupation, and other details are given without responsibility and any intending purchasers or tenants should not rely on them as statements or representations of fact but must satisfy themselves by inspection or otherwise as to the correctness of each of them. 3. No person in the employment of Messrs. Aldreds has any authority to make or give any representation or warranty whatever in relation to this property. 4. If you are proposing to visit the property and are travelling some distance please check with Aldreds on the issue of availability prior to travelling. 5. Aldreds Property Consultants and associated services may offer additional services to the prospective purchaser for which they will be entitled to receive a commission. Aldreds are pleased to be working with Mortgage Advice Bureau. They're an award-winning mortgage broker with over 1,400 advisers across the UK, and have access to over 12,000 mortgage products from over 90 lenders. Aldreds Estate Agents Ltd receive a commission of £200 on each completed case. Your home may be repossessed if you do not keep up repayments on your mortgage. There may be a fee for mortgage advice. The actual amount you pay will depend upon your circumstances. The fee is up to 1%, but a typical fee is 0.3% of the amount borrowed. Mortgage Advice Bureau is a trading name of Mortgage Seeker Limited which is an appointed representative of Mortgage Advice Bureau Limited and Mortgage Advice Bureau (Derby) Limited which are authorised and regulated by the Financial Conduct Authority. Mortgage Seeker Limited Registered Office: Lovewell Blake, Sixty Six North Quay, Great Yarmouth, Norfolk, NR30 1HE. Registered in England Number: 03721415. 6. Potential purchasers should check with their providers that the broadband and mobile phone coverage they would require is available.

Energy Efficiency Graph

